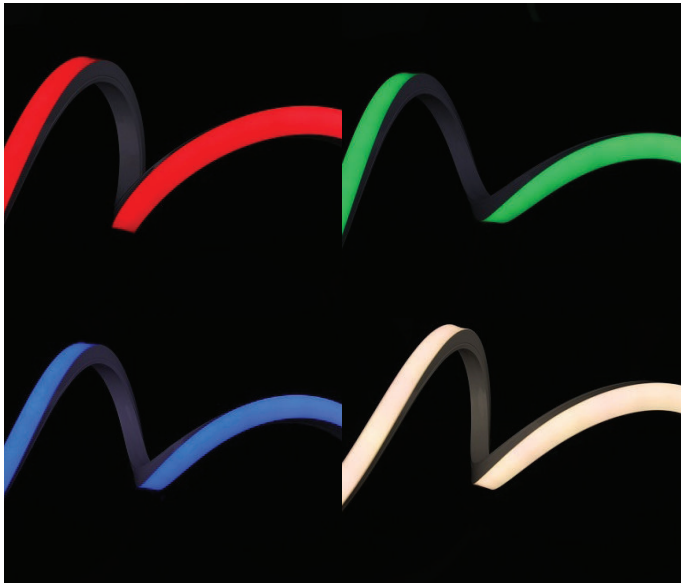


PROJECT	TYPE	NOTES
OVERVIEW		

The TL120NEON-RGBW utilizes 120VDC to control your long-run neon applications. Maximum runs of 131ft allow for design freedom. Dotless and diode free imaging is guaranteed.



TECHNICAL SPECIFICATIONS

Operating Voltage	120VDC
Power Consumption	4.3W/ft
Lumens (RGB+W / White)	305lm/ft / 125lm/ft
Efficacy (RGB+W)	22lm/W
Beam Spread	120°
Colors	Red, Green, Blue, 4000K
CRI (White)	90+
LED Life	36,000 hrs
Cuttable Increments	12"
Maximum Run Length	131'
Warranty	5 years
Certification	cETLus - UL1598

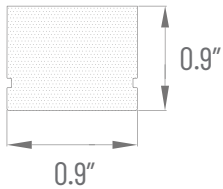
ORDER CODE

TL120NEON	RGBW	-	-
		POWER FEED PFIH - Inline Hardwire PFBH - Bottom Hardwire	ROLL LENGTH 40 - 40M/131ft XX - Custom

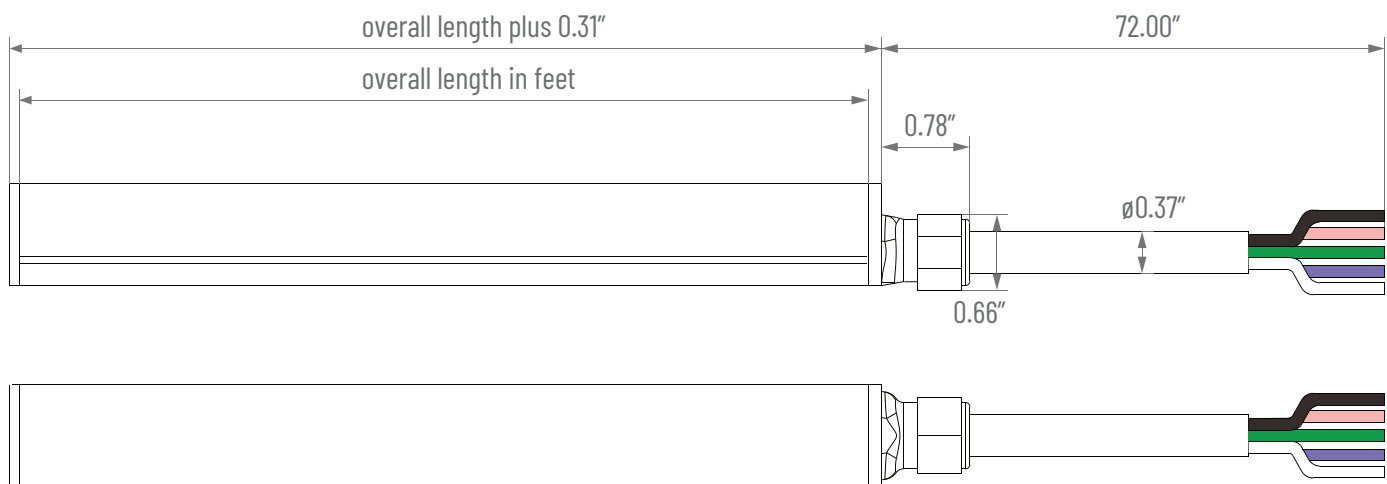


DIMENSIONS

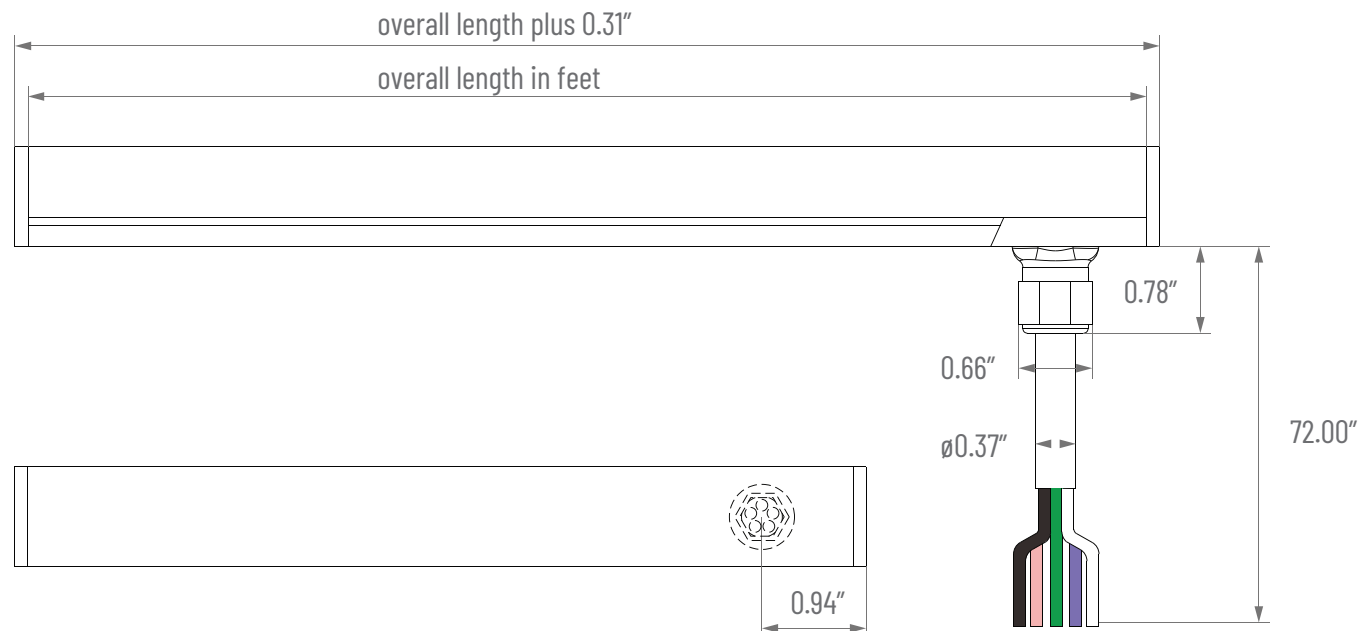
BODY



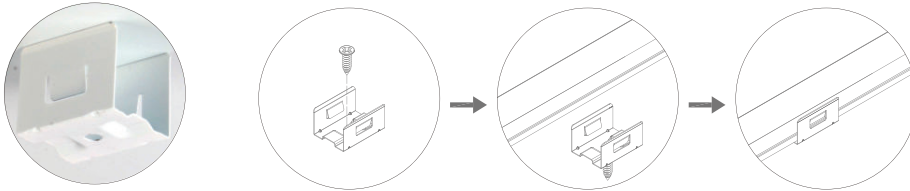
TL120NEON-RGBW-PFIH - Power feed inline hardwire



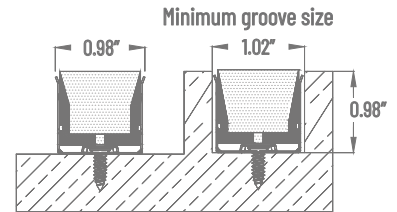
TL120NEON-RGBW-PFBH - Power feed bottom hardwire



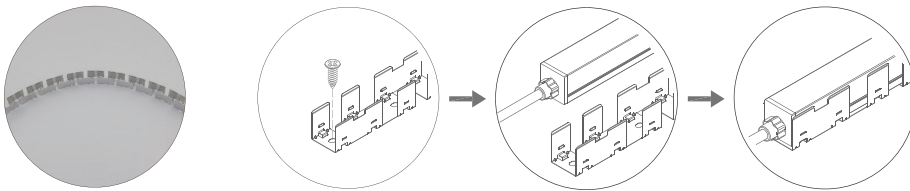
ACCESSORIES / INSTALLATION



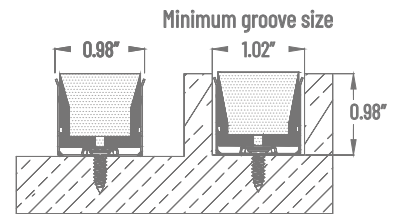
TL120NEON-RGBW-CL - Stainless steel mounting clip (one clip per foot)



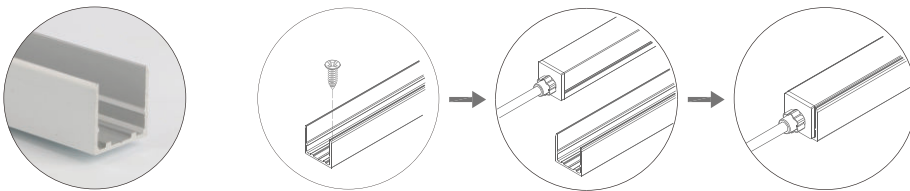
Surface Mount Recessed Mount



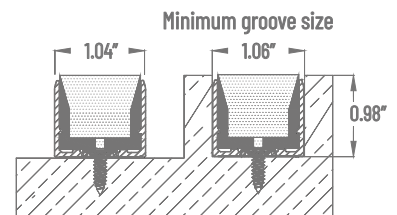
TL120NEON-RGBW-SST - Stainless steel mounting track



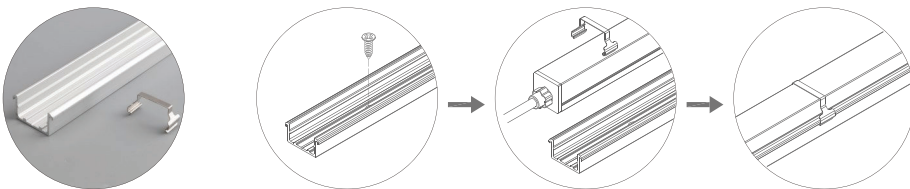
Surface Mount Recessed Mount



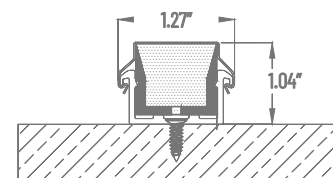
TL120NEON-RGBW-AC - Aluminum channel



Surface Mount Recessed Mount

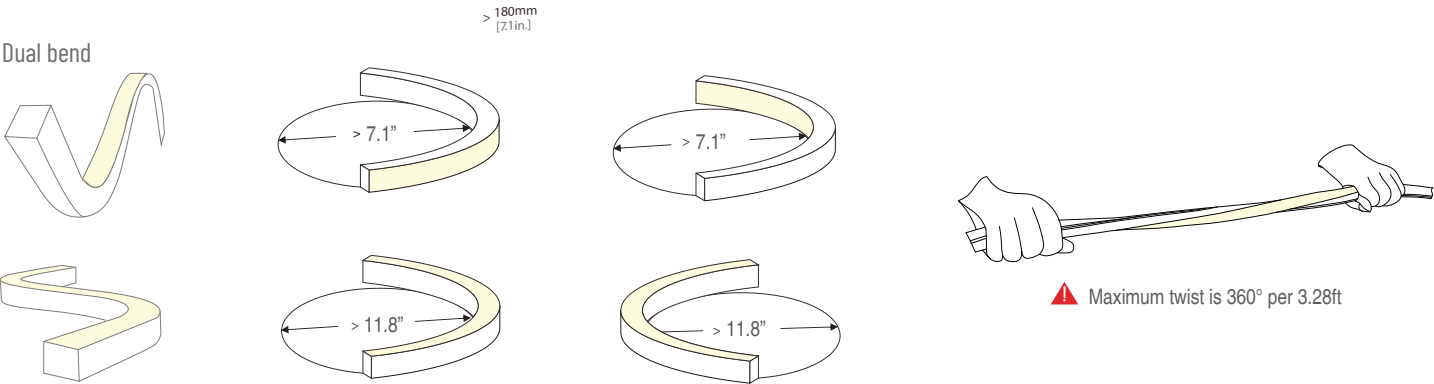


TL120NEON-TB-ACCL - Aluminum mounting channel with clips

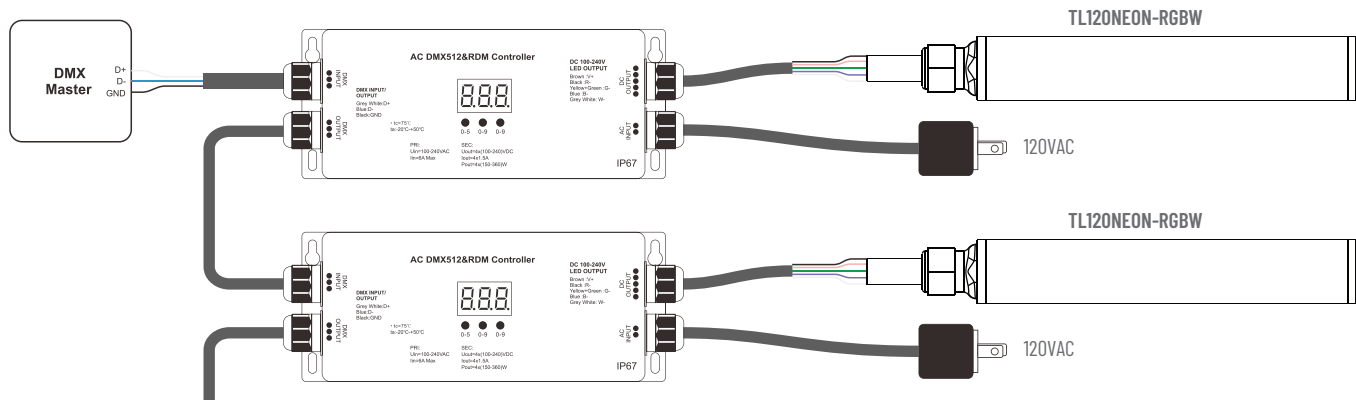


Surface Mount

ACCESSORIES / INSTALLATION



WIRING/CONTROL



CONTROLLER CUTSHEETS

DESCRIPTION	INPUT	OUTPUT	WATTAGE	SPECIFICATION SHEETS	
RGB/W DMX Controller	12-24VDC	12-24VDC	N/A	DR-DMX-RGBW-WIFI-CON	
120VAC 4 Channel DMX Decoder	120VAC	120VDC	660W max.	DR-DMX-120-4CH-DEC	

