

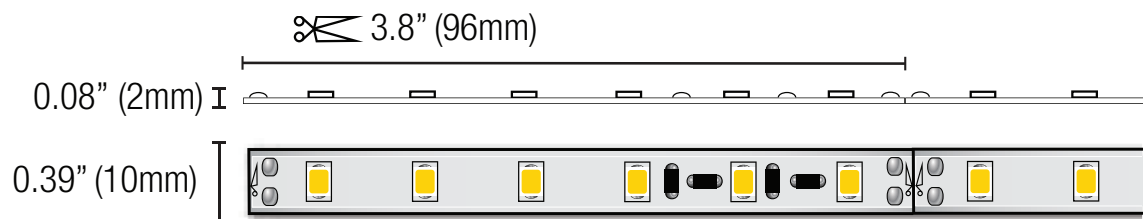
TL24HO-60 - LED Tape Light

Product Features:

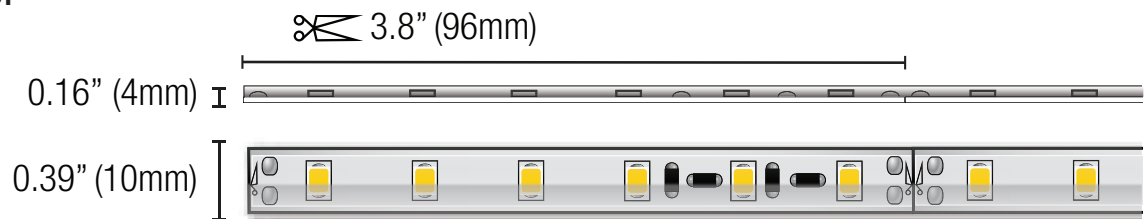
- 2.6W/ft (8.5W/M), 285lm/ft (@3000K)
- 32.8ft (10M) run lengths
- 18 chips/ft (60 chips/M)
- 90+ CRI, 2-Step MacAdam ellipse binning
- Field cuttable every 3.8"
- Available in 1800K, 2200K, 2400K, 2700K, 3000K, 3500K, 4000K, 5000K
- Available in IP20, IP65, IP67, IP68
- 5 year warranty



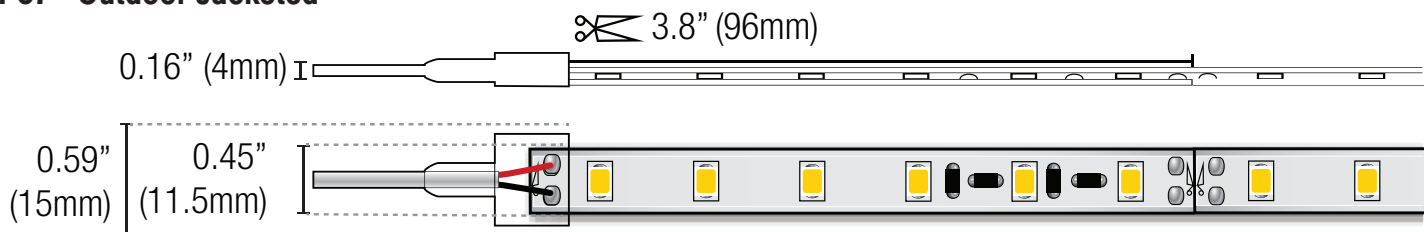
IP20 - Indoor



IP65 - Moisture Proof

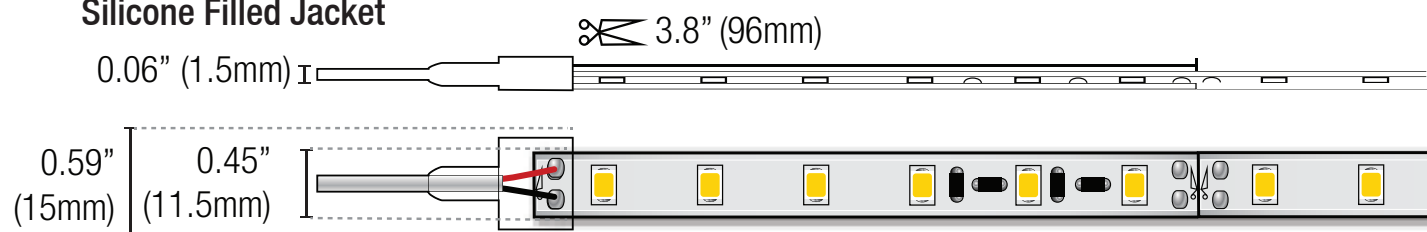


IP67 - Outdoor Jacketed



IP68 - Submersible

Silicone Filled Jacket



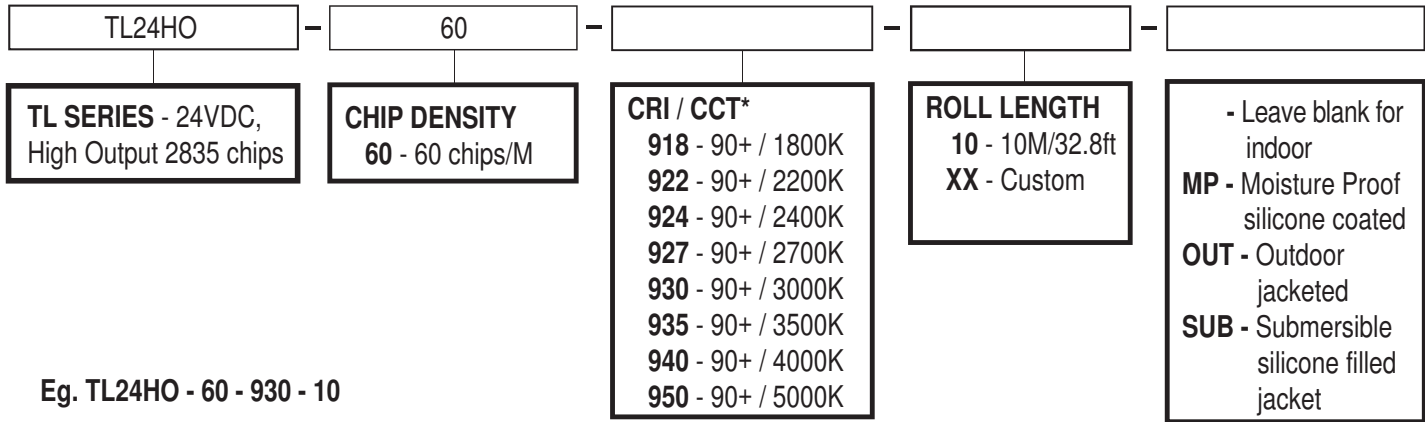
TL24HO-60 - LED Tape Light

Specifications:

LED Tape	IP Rating	Voltage	LED Qty. per M/ft	CRI	CCT ¹	Roll Length ²	Light Output ³	Power	Dims ⁴	Cut Length	Max. Run
Indoor	IP	VDC	per M/ft		K	M/ft	lm/ft	W/ft	W x H"	Inches	M/ft
TL24HO-60-9XX-10	20	24	60/18	90+	3000K, 4000K	10/32.8	285	2.6	.39 x .08"	3.8"	10/32.8
TL24HO-60-9XX-10-MP	65	24	60/18	90+	CUSTOM	10/32.8	285	2.6	.39 x .12"	3.8"	10/32.8
TL24HO-60-9XX-10-OUT	67	24	60/18	90+	2700K, 3000K, 4000K	10/32.8	285	2.6	.45 x .16"	3.8"	10/32.8
TL24HO-60-9XX-10-SUB	68	24	60/18	90+	CUSTOM	10/32.8	285	2.6	.45 x .16"	3.8"	10/32.8

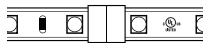
¹Only stocked CCTs shown ²Custom cuts and roll lengths available ³All light outputs based on 3000K ⁴End caps for OUT & SUB tapes are .59" x .28"

Ordering Code:

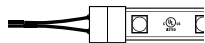


*Not all CCTs are stock, please check for availability

Solderless Connectors:



TLHO-SC1 - Link



TLHO-SC2 - Lead 5.5"



TLHO-SC3 - Jumper 5"



TLHO-SC4 - 90° Elbow

Outdoor Connector for OUT & SUB tape (solder only):



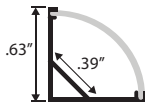
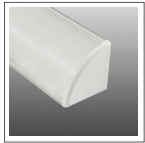
TL-C-OUT - Outdoor Connector 10"

TL24HO-60 - LED Tape Light

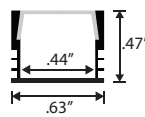
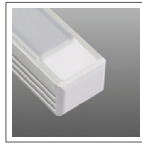
Compatible Channels:

- - Indoor & MP tapes solderless connections
- - Indoor & MP tapes soldered connections only
- - OUT & SUB tapes soldered connections only. End caps sit flat
- - OUT & SUB tapes soldered connections only. End caps sit angled

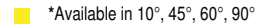
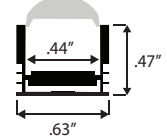
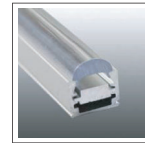
AP-LL8 - Corner Mount - FR



AP-LL9 - Square - FR, OPQ

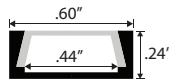
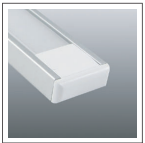


AP-LL9-FCS-XX - Square Focus* - CLR

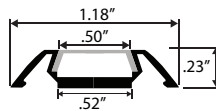
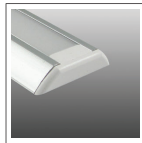


*Available in 10°, 45°, 60°, 90°

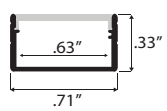
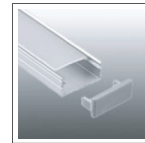
AP-LL10 - Slim - FR



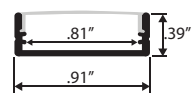
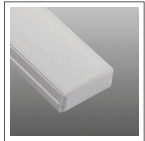
AP-LL11 - Low Profile - FR



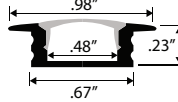
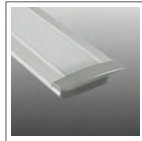
AP-LL12 - Medium Slim - FR



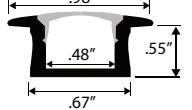
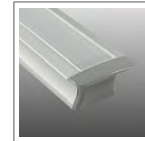
AP-LL13 - Wide Slim - FR, OPQ



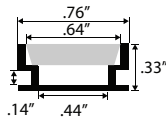
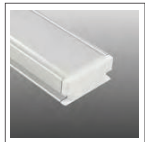
AP-LL15 - Slim Recessed - FR, CLR, OPQ



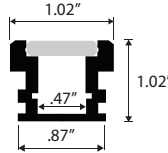
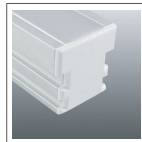
AP-LL16 - Deep Recessed - FR, CLR, OPQ



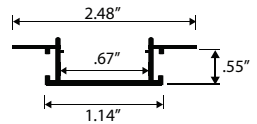
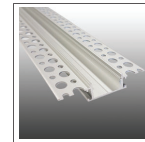
AP-LL21 - Inground Slim - FR



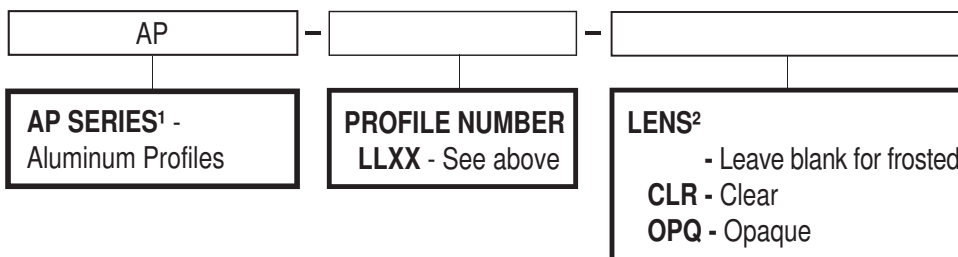
AP-LL22 - Inground Deep - FR



AP-LL23 - Mud-in Recessed - OPQ - 3M (10ft)



Ordering Code:



¹All profiles are 1M (3.28ft) in length unless otherwise specified. All include endcaps and mounting hardware.

²All profiles except AP-LL9-FCS & AP-LL23 come standard with frosted lenses. AP-LL9-FCS lenses are clear. AP-LL23 lenses are opaque.

TL24HO-60 - LED Tape Light

DRIVERS:

DESCRIPTION	INPUT	OUTPUT	WATTAGE	SPEC SHEET LINKS
Non-Dimming Outdoor	100-265VAC	24VDC	30W-150W	DR-24VDC-OUT
Universal Dimming Indoor	120VAC	24VDC	24W, 48W, 60W	DR-24VDC-DIMA
Universal Dimming Indoor/Outdoor	120VAC	24VDC	96W	DR-96W24VDC-DIMB
MLV Dimming Indoor/Outdoor	120VAC	24VDC	20W-300W	DR-24VDC-DIMM
MLV Dimming Indoor/Outdoor 277V	277VAC	24VDC	20W-300W	DR-24VDC-DIMM-277
0-10V Dimming Indoor/Outdoor	100-277VAC	24VDC	40W-480W	DR-24VDC-DIMW-0-10V

Wire Gauge Calculator - Load vs AWG vs Max. Distance Away From Driver

LOAD	10W	20W	30W	40W	50W	60W	70W	80W	90W	100W
WIRE GAUGE										
20AWG	85 ft	43 ft	27 ft	21 ft	17 ft	14 ft	12 ft	11 ft	9 ft	8 ft
18AWG	134 ft	68 ft	45 ft	33 ft	27 ft	22 ft	19 ft	17 ft	15 ft	14 ft
16AWG	215 ft	109 ft	72 ft	54 ft	43 ft	36 ft	31 ft	27 ft	24 ft	22 ft
14AWG	345 ft	174 ft	115 ft	86 ft	69 ft	57 ft	49 ft	43 ft	39 ft	36 ft
12AWG	539 ft	272 ft	181 ft	135 ft	108 ft	90 ft	77 ft	68 ft	61 ft	56 ft
10AWG	784 ft	397 ft	263 ft	197 ft	158 ft	131 ft	112 ft	98 ft	87 ft	82 ft