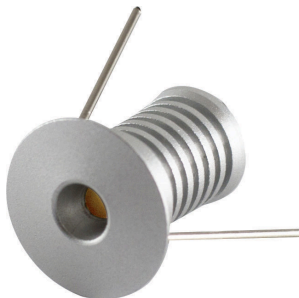
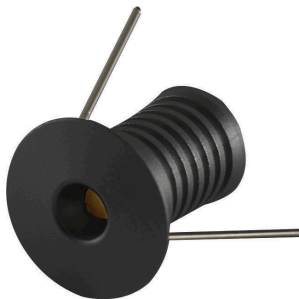
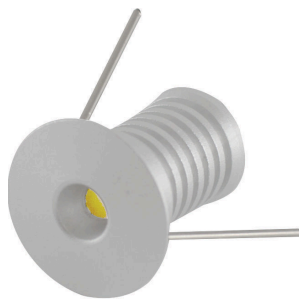


PROJECT	TYPE	NOTES
---------	------	-------

OVERVIEW

The MSW5 LED step/wall light is a discreet recessed pin light fixture. These step/wall lights are great for interior and exterior step lighting applications.

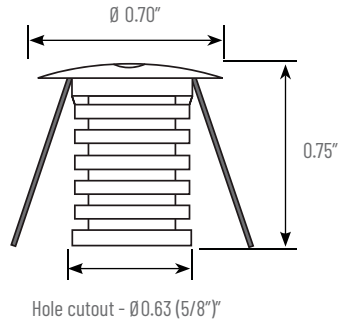


TECHNICAL SPECIFICATIONS

Operating Voltage	12VDC
Power Consumption	0.5W
Lumens Delivered	20lm
Efficacy	10lm/W
LED Chips	SMD
Color Temperatures	3000K
CRI	85+
MacAdam Ellipse Binning	3-step
Beam Spread	25°
Dimmable	YES
Housing	Aluminum
Warranty	5 years



DIMENSIONS







ORDER CODE

MSW5	121	3K	-
------	-----	----	---

FINISH

- BL - Black
- MS - Matte Silver
- WH - White

DRIVER CUTSHEETS

DESCRIPTION	INPUT	OUTPUT	WATTAGES	SPECIFICATION SHEETS
Non-Dimming Indoor	120VAC	12VDC	15W, 30W	DR-12VDC 
Non-Dimming Indoor/Outdoor	120VAC	12VDC	30W-264W	DR-12VDC-OUT 
Universal Phase Dimming Indoor	120VAC	12VDC	24W 48W 60W	DR-12VDC-DIMA 
Univ. Phase/0-10V Dimming Ind./Out.	100-277VAC	12VDC	30W-300W	DR-12VDC-DIMS-UNV 

VOLTAGE DROP CALCULATOR Wire Gauge Calculator - Load vs AWG vs Max. Distance Away From Driver

LOAD (WIRE GAUGE)	10W	20W	30W	40W	50W	60W
20AWG	18 ft	9 ft	6 ft	5 ft	4 ft	3 ft
18AWG	34 ft	17 ft	11 ft	8 ft	6 ft	5 ft
16AWG	54 ft	27 ft	18 ft	13 ft	10 ft	9 ft
14AWG	86 ft	43 ft	29 ft	21 ft	17 ft	14 ft
12AWG	134 ft	68 ft	45 ft	34 ft	27 ft	22 ft
10AWG	199 ft	99 ft	66 ft	49 ft	39 ft	33 ft

