
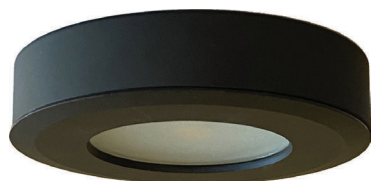


| PROJECT | TYPE | NOTES |
|---------|------|-------|
|---------|------|-------|

OVERVIEW

The UC124 LED puck light uses a single chip COB and a frosted glass lens to reduce the traditional scalloping effect produced by traditional halogen puck lights. With a CRI of 90+ these LED puck lights offer exceptional color rendering. Great for indoor and outdoor applications these puck lights are offered in multiple CCTs, RGB, RGBW and Classic Dim (DtW) options. Available as surface or recessed mount.

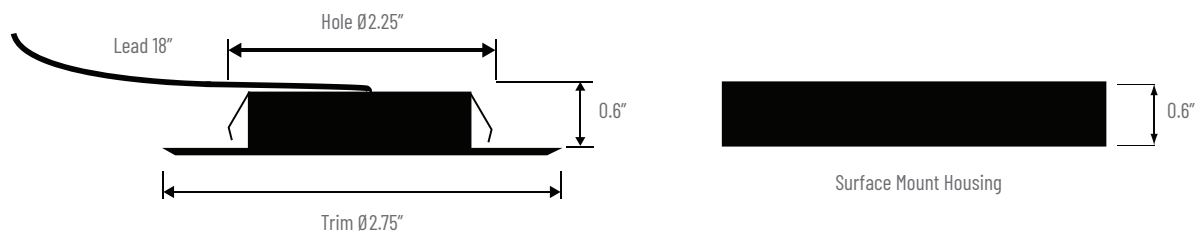
[IES FILE \(3000K\)](#)  [DOWNLOAD](#)



TECHNICAL SPECIFICATIONS

| | |
|--------------------------|-------------------------------------|
| Operating Voltage | 12VDC |
| Power Consumption | 4W |
| Lumens Delivered (3000K) | 277lm |
| Efficacy (3000K) | 74lm/W |
| LED Chips | Static Color - COB/CD(DtW) - Array |
| Color Temperatures | 2700K, 3000K, 4000K, RGBW, CD (DtW) |
| CRI | 90+ |
| R9 Value | 54 |
| MacAdam Ellipse Binning | 3-step |
| LED Life | 50,000 hrs |
| Dimmable | YES (2%) |
| Warranty | 5 years |

DIMENSIONS



ORDER CODE

| | | |
|-------|---|---|
| UC124 | - | - |
|-------|---|---|

CRI / CCT

- 927** - 90+ / 2700K
- 930** - 90+ / 3000K
- 940** - 90+ / 4000K
- RGBW** - RGB White
- CD** - Classic Dim (DtW)
3000-1800K

FINISH

- BL** - Black
- BS** - Brushed Steel
- WH** - White

DRIVER CUTSHEETS

| DESCRIPTION | INPUT | OUTPUT | WATTAGES | SPECIFICATION SHEETS |
|-------------------------------------|------------|--------|-------------|--|
| Non-Dimming Indoor | 120VAC | 12VDC | 15W, 30W | DR-12VDC  |
| Non-Dimming Indoor/Outdoor | 120VAC | 12VDC | 30W-264W | DR-12VDC-OUT  |
| Universal Phase Dimming Indoor | 120VAC | 12VDC | 24W 48W 60W | DR-12VDC-DIMA  |
| Univ. Phase/0-10V Dimming Ind./Out. | 100-277VAC | 12VDC | 30W-300W | DR-12VDC-DIMS-UNV  |
| RGB/W Controller Indoor | 12-36VDC | 12VDC | 768W max. | DR-RGBW-WIFI-CON  |
| RGB/W DMX Controller | 12-24VDC | 12VDC | N/A | DR-DMX-RGBW-WIFI-CON  |
| 5 Channel DMX Decoder | 12-24VDC | 12VDC | 960W max. | DR-DMX-5CH-DEC  |

VOLTAGE DROP CALCULATOR

Wire Gauge Calculator - Load vs AWG vs Max. Distance Away From Driver

| LOAD (WIRE GAUGE) | 10W | 20W | 30W | 40W | 50W | 60W |
|-------------------|--------|-------|-------|-------|-------|-------|
| 20AWG | 18 ft | 9 ft | 6 ft | 5 ft | 4 ft | 3 ft |
| 18AWG | 34 ft | 17 ft | 11 ft | 8 ft | 6 ft | 5 ft |
| 16AWG | 54 ft | 27 ft | 18 ft | 13 ft | 10 ft | 9 ft |
| 14AWG | 86 ft | 43 ft | 29 ft | 21 ft | 17 ft | 14 ft |
| 12AWG | 134 ft | 68 ft | 45 ft | 34 ft | 27 ft | 22 ft |
| 10AWG | 199 ft | 99 ft | 66 ft | 49 ft | 39 ft | 33 ft |

