
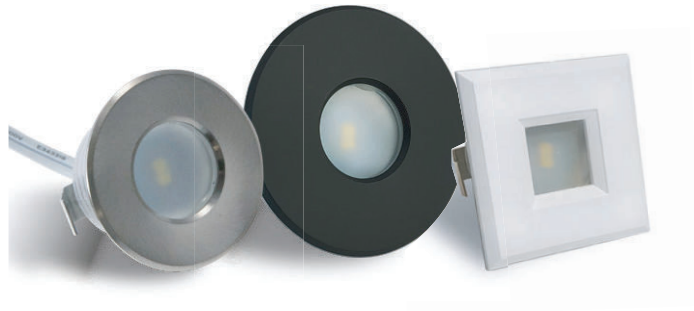


PROJECT	TYPE	NOTES
---------	------	-------

OVERVIEW

The MSW2 LED step/wall light uses a single chip COB and an acrylic lens. It's aluminum housing lends to its durability. These step/wall lights are great for interior and exterior step lighting applications. They are also used in millwork applications.

[IES FILE \(3000K\)](#)  [DOWNLOAD](#)

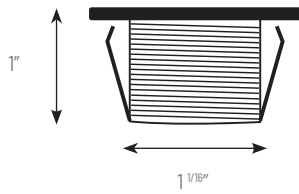


TECHNICAL SPECIFICATIONS

Operating Voltage	12VDC
Power Consumption	0.5W
Lumens Delivered (3000K)	20lm
Efficacy (3000K)	40lm/W
LED Chips	SMD
Color Temperatures	3000K, 5000K, CD (DtW 3000K - 1800K), RGB
CRI	85+
MacAdam Ellipse Binning	3-step
Beam	120°
Dimmable	YES
Housing	Polycarbonate
Trims	Steel
Warranty	5 years



DIMENSIONS



Cutout - $\varnothing 1 \frac{3}{8}$ "

TRIMS



RD - Round Scoop
(scoop removed)



RS - Round Scoop
 $\varnothing 1.54$ "



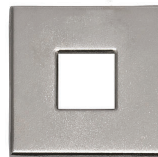
RL - Round Louver
 $\varnothing 1.54$ "



MR - Medium Round
 $\varnothing 2.00$ "



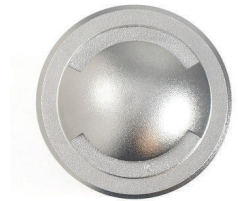
LR - Large Round
 $\varnothing 2.75$ "



SSS - Stainless Steel Square
1.54 x 1.54"



SS1 - Stainless Steel 1-Way
 $\varnothing 1.80$ "



SS2 - Stainless Steel 2-Way
 $\varnothing 1.80$ "

ORDER CODE

MSW2	121	-	-	-
------	-----	---	---	---

CCT

- 3K - 3000K
- 5K - 5000K
- CD - Classic Dim (DtW)
- RGB - Red Green Blue

TRIM

- RS - Round Scoop
- RL - Round Louver
- MR - Medium Round
- LR - Large Round*
- SSS - St. Steel Square**
- SS1 - St. Steel 1-Way**
- SS2 - St. Steel 2-Way**

FINISH

- BL - Matte Black
- BS - Brushed Steel
- WH - White

*Only available in Brushed Steel, **304 Stainless Steel



DRIVER CUTSHEETS

DESCRIPTION	INPUT	OUTPUT	WATTAGES	SPECIFICATION SHEETS	
Non-Dimming Indoor	120VAC	12VDC	15W, 30W	DR-12VDC	
Non-Dimming Indoor/Outdoor	120VAC	12VDC	30W-264W	DR-12VDC-OUT	
Universal Phase Dimming Indoor	120VAC	12VDC	24W 48W 60W	DR-12VDC-DIMA	
Univ. Phase/0-10V Dimming Ind./Out.	100-277VAC	12VDC	30W-300W	DR-12VDC-DIMS-UNV	
RGB/W Controller Indoor	12-36VDC	12VDC	768W max.	DR-RGBW-WIFI-CON	
RGB/W Controller Outdoor	12-24VDC	12VDC	480W max.	DR-RGBW-WIFI-CON-OUT	
DMX Controller Indoor	120VAC	12VDC	N/A	DR-DMX-RGBW-WIFI-CON	
DMX 5 Channel Decoder	12VDC	12VDC	960W max.	DR-DMX-5CH-DEC	

VOLTAGE DROP CALCULATOR Wire Gauge Calculator - Load vs AWG vs Max. Distance Away From Driver

LOAD (WIRE GAUGE)	10W	20W	30W	40W	50W	60W
20AWG	18 ft	9 ft	6 ft	5 ft	4 ft	3 ft
18AWG	34 ft	17 ft	11 ft	8 ft	6 ft	5 ft
16AWG	54 ft	27 ft	18 ft	13 ft	10 ft	9 ft
14AWG	86 ft	43 ft	29 ft	21 ft	17 ft	14 ft
12AWG	134 ft	68 ft	45 ft	34 ft	27 ft	22 ft
10AWG	199 ft	99 ft	66 ft	49 ft	39 ft	33 ft

