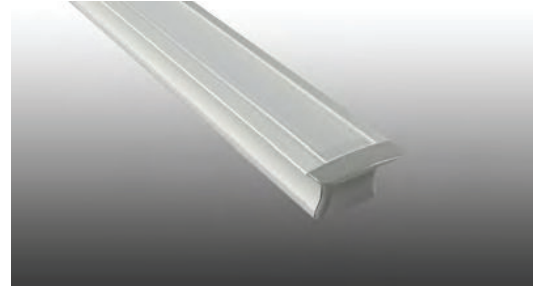


## AP-LLXX - Aluminum Profiles for LED Tape Light

### Product Features:

- Silver anodized aluminum finish, custom matte black available
- Standard 3.28ft (1M) lengths, custom lengths available
- AP-LL23 10ft standard length
- Surface mounted, recessed mounted, inground options available
- All mounting hardware and end-caps included

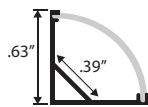
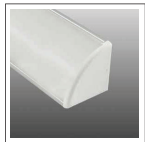


### Product Specifications:

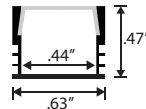
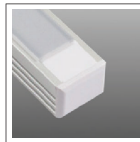
#### Aluminum Channels

Not all solderless connectors and/or LED tape will fit into every channel please check tape light cut sheets for compatibility.

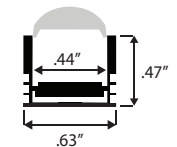
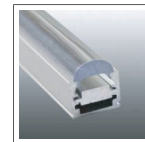
**AP-LL8 - Corner Mount**



**AP-LL9 - Square**

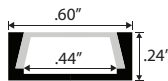
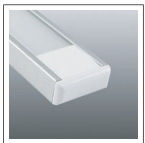


**AP-LL9-FCS-XX - Square Focus\***

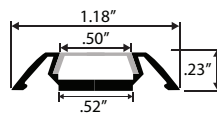
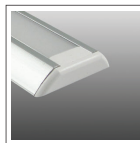


\*Available in 10°, 45°, 60°, 90°

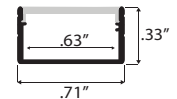
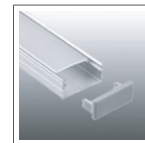
**AP-LL10 - Slim**



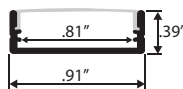
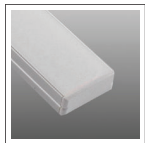
**AP-LL11 - Low Profile**



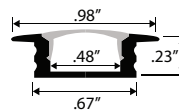
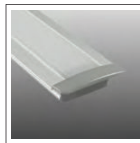
**AP-LL12 - Medium Slim**



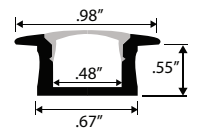
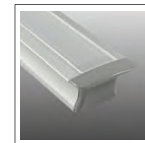
**AP-LL13 - Wide Slim**



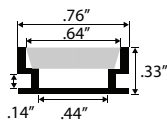
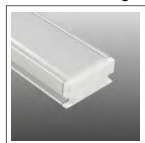
**AP-LL15 - Slim Recessed**



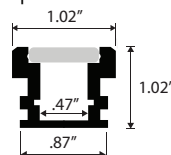
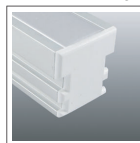
**AP-LL16 - Deep Recessed**



**AP-LL21 - Inground Slim**



**AP-LL22 - Inground Deep**



**AP-LL23 - Mud-in Recessed**

