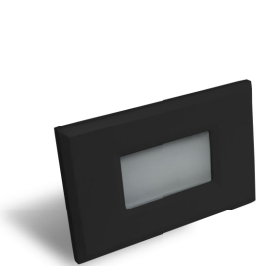


Date: _____	Job: _____	Type: _____
Notes: _____		Quantity: _____

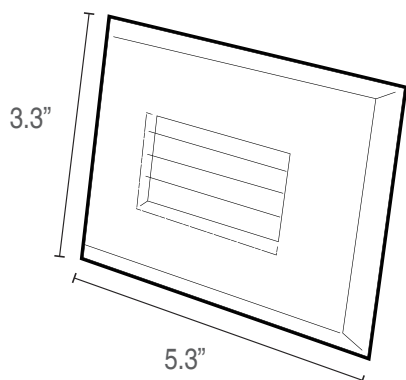
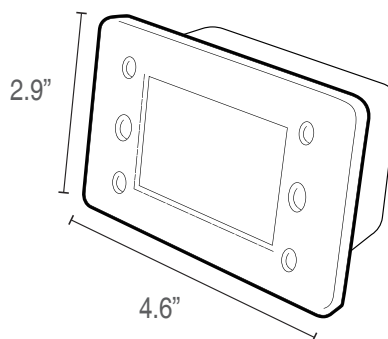


The SW123 low voltage single gang step wall light offers excellent step and walkway lighting in a small, modern form factor. Mounting into a standard single gang junction box and powered by 120V makes for installation with ease.

IP67








Technical Specifications:

Input Voltage	120-240VAC
Power Consumption	2.6W
Lumens	43-70lm
Efficacy (3000K)	35lm/W
IES File (3000K)	↓
Color Temperature	3000K, RGB, RGBW
CRI	90+ (3000k)
Dimmable	Yes
Lens	Polycarbonate
Trim	Cast aluminum
IP Rating	IP67
LED Life	60,000 hrs
Warranty	5 years

Dimensions:**TRIM****FIXTURE****Ordering Code:**

SW123	-		-		-	
		CCT		TRIM		FINISH
		3K - 3000K		F- Flat/Window		BL- Black
		RGB - RGB		LH- Louver Horizontal		BS - Brushed Steel
		RGBW - RGB+White		LV - Louver Vertical		WH - White
				S - Scoop		

Driver Cutsheets:

DESCRIPTION	INPUT	OUTPUT	WATTAGES	SPECIFICATION SHEETS
Non-Dimming Indoor	120VAC	12VDC	15W, 30W	DR-12VDC 
Non-Dimming Indoor/Outdoor	120VAC	12VDC	30W-264W	DR-12VDC-OUT 
Universal Phase Dimming Indoor	120VAC	12VDC	24W 48W 60W	DR-12VDC-DIMA 
Univ. Phase/0-10V Dimming Ind./Out.	100-277VAC	12VDC	30W-300W	DR-12VDC-DIMS-UNV 
RGB/W Controller Indoor	12-36VDC	12-36VDC	768W max.	DR-RGBW-WIFI-CON 
RGB/W Controller Outdoor	12-36VDC	12-36VDC	480W max.	DR-RGBW-WIFI-CON-OUT 
5 Channel DMX Digital Decoder	12-24VDC	12-24VDC	768W max.	DR-DMX-5CH-DEC 
RGB/W DMX Controller	12-36VDC	12-36VDC	N/A	DR-DMX-RGBW-CON 