

AP-LLXX - Aluminum Profiles for LED Tape Light

Product Features:

- Silver, anodized aluminum, finish
- Standard 3.28ft (1M) lengths, custom lengths available
- Surface mounted, recessed mounted, inground options available
- All mounting hardware and endcaps included

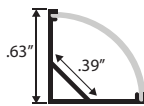
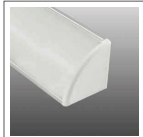


Product Specifications:

Aluminum Channels

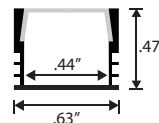
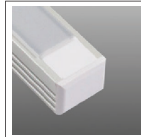
Compatible solderless connectors (TLSO / TLHO / TLRGB / TLRGBW) and LED tape light (Indoor / MP = Moisture Proof / Outdoor / RGB / RGBW) are listed below. Not all solderless connectors and/or LED tape will fit into every channel.

AP-LL8 - Corner Mount



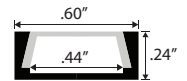
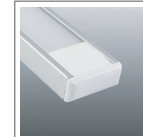
TLSO / TLHO / TLRGB
Indoor / MP / Outdoor / RGB

AP-LL9 - Square



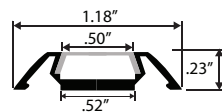
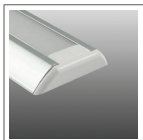
None (solder only)
Indoor / MP / RGB

AP-LL10 - Slim



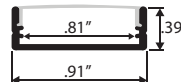
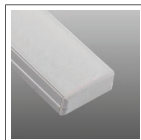
None (solder only)
Indoor / MP / RGB

AP-LL11 - Low Profile



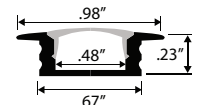
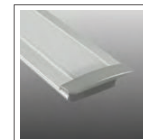
None (solder only)
Indoor / MP / RGB

AP-LL13 - Wide Slim



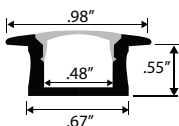
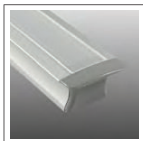
TLSO / TLHO / TLRGB / TLRGBW
Indoor / MP / Outdoor / RGB / RGBW

AP-LL15 - Slim Recessed



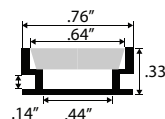
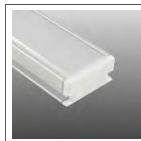
None (solder only)
Indoor / MP / RGB

AP-LL16 - Deep Recessed



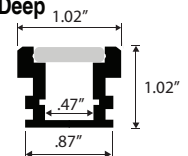
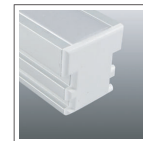
None (solder only)
Indoor / MP / Outdoor / RGB

AP-LL21 - Inground Slim



None (solder only)
Indoor / MP / Outdoor / RGB

AP-LL22 - Inground Deep



None (solder only)
Indoor / MP / Outdoor / RGB